

# EARLY LEARNING TODAY

Apr-May-Jun 2007

Serving Early Care & Education Professionals, Communities & Families of Southeast Missouri

Child Care Resource & Referral • Workshop On Wheels

## CONNECTING WITH FAMILIES

Parents who have young children with disabilities look for child care for the same reason any parent does. However, finding child care is often more challenging. They may have additional concerns and perhaps a need for specialized care or equipment. You can help parents who have children with disabilities decide if yours is the “right” program—one that fits their needs as well as their child’s needs—by listening to the parents’ interests and concerns, describing your program accurately, and discussing together whether your program matches their expectations.

When a parent makes that first call to your program, 1) LISTEN and learn about the child’s strengths and needs, any special concerns, and the kind of care they expect. 2) DESCRIBE your program, including your philosophy as well as hours and fees. Tell parents what you expect from children and families in your program and what they can expect from you. Talk openly about your experience of including children with disabilities. Let parents know what services you can offer as well as what services you are not able to provide. 3) DISCUSS how the parents’ needs match your program’s abilities. Talk honestly about your concerns and explain the kind of support you may need. Together identify ways to successfully include their child. Ask them for help with any special equipment or skills you need. Use this discussion to set the stage for a future partnership based on communication and trust. If the child is enrolled, you will already have valuable information about how to include him or her, and you can look forward to the child’s participation in your program. Using this process, both of you will have begun to identify what it will take to be sure that yours is the “right” program.

Taken from Child Care Plus+  
[www.ccplus.org](http://www.ccplus.org)

- Amy Franklin  
Inclusion Specialist

## ATTENTION ALL CHILD CARE PROVIDERS

### ★ QUARTERLY DRAWING ★

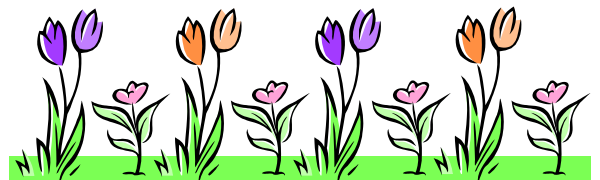
We receive calls daily from parents seeking child care. We want to provide them with the most accurate information possible.

Please call us each month to let us know about your fee changes and if you have openings. If we are not in the office, just leave a message on my voice mail.

Every quarter we will enter the name of each provider who calls with vacancies into a drawing to be held on the last weekday of the month!  
Call 573-290-5577 or  
Toll-free at 1-800-811-1127 ex. 1

### WHO WILL BE OUR NEXT WINNERS??

*WILL IT BE YOU?*



### Inside this issue:

- ▶ Upcoming trainings & seminars
- ▶ Photos from Messy Morning
- ▶ Training Opportunities Calendar
- ▶ Orientation Trainings Registration Form
- ▶ Child Care Plus on Inclusion Registration Form
- ▶ P.A.C.E. Registration Form