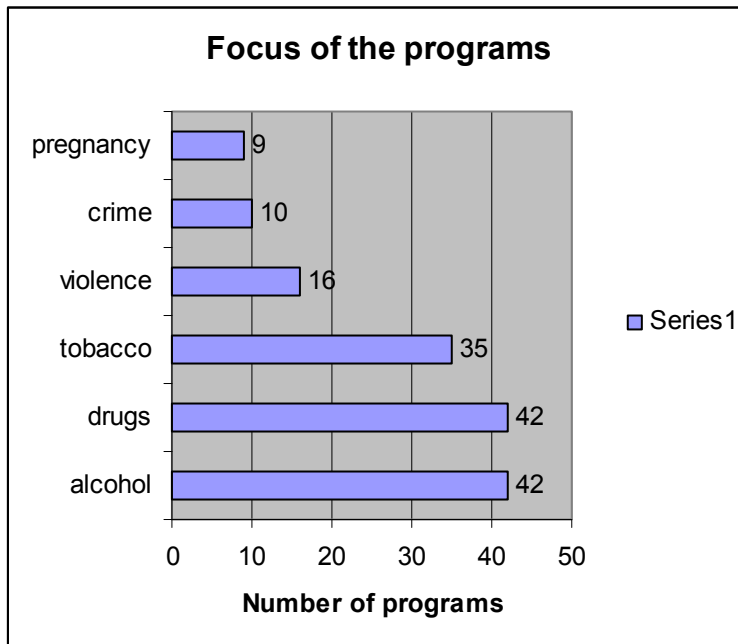


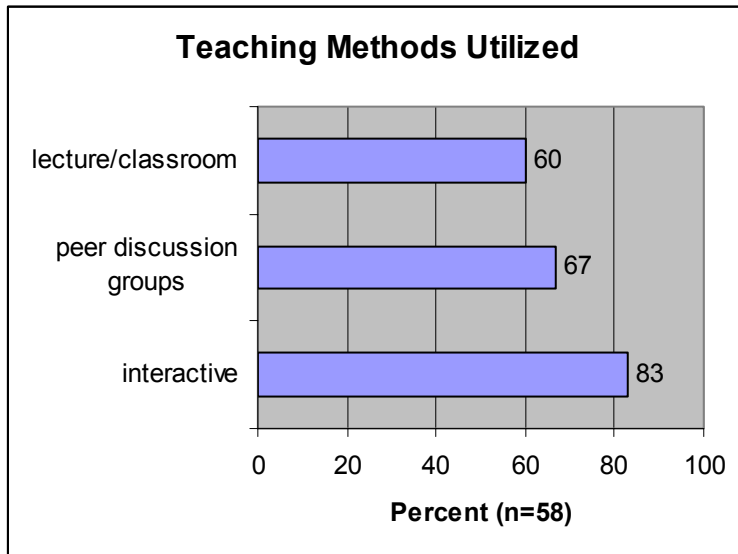
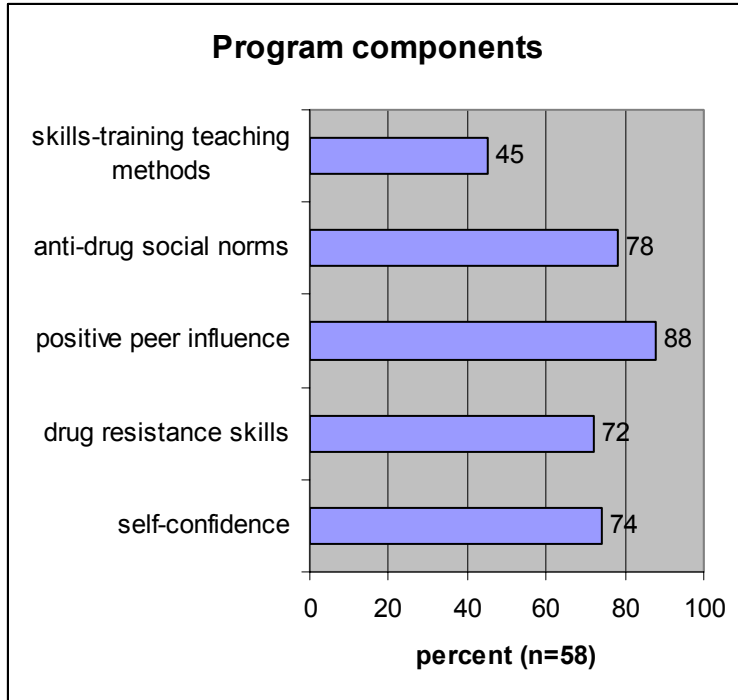
Southeast Missouri Youth Substance Abuse Coalition
Survey Results

279 programs surveyed

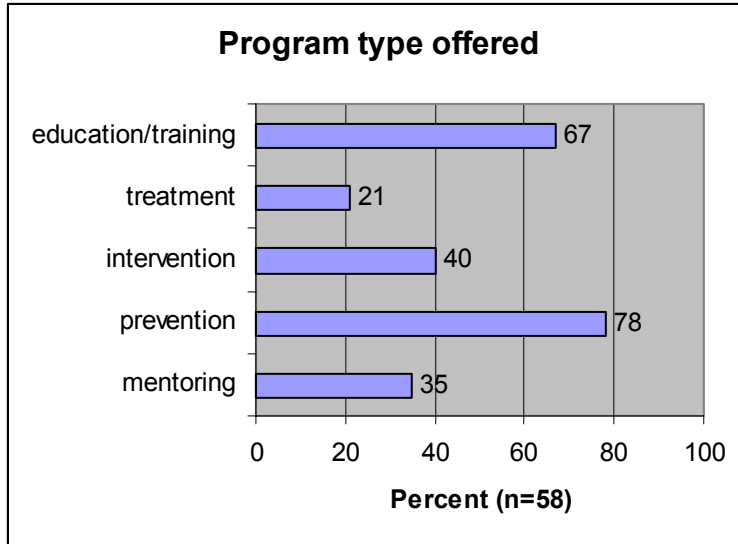
- 135 programs did not offer programming for specified focus areas
- 12 duplicated programs
- 132 programs identified that do offer programming in the surveys focus areas
- 58 programs that offer programming in the focus areas responded
- 72% response rate of all programs surveyed
- 44% response rate of programs offering programming in the focus areas



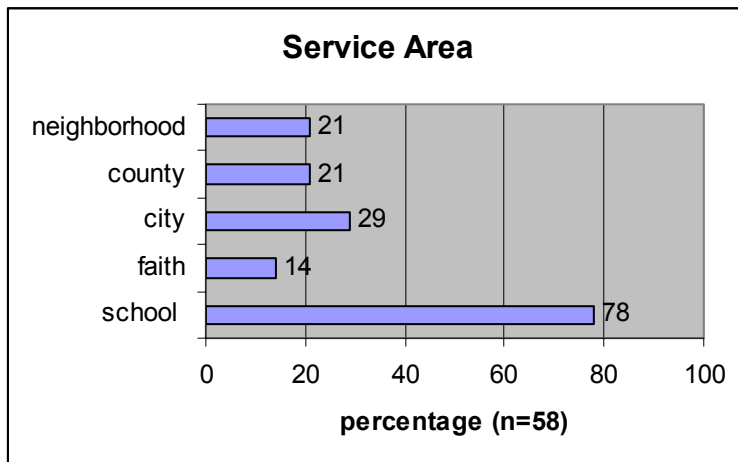
Southeast Missouri Youth Substance Abuse Coalition
Survey Results



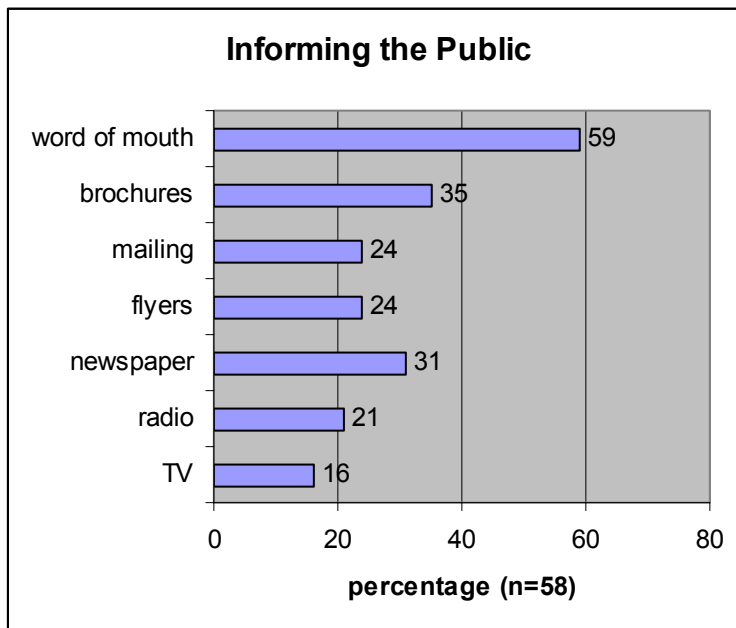
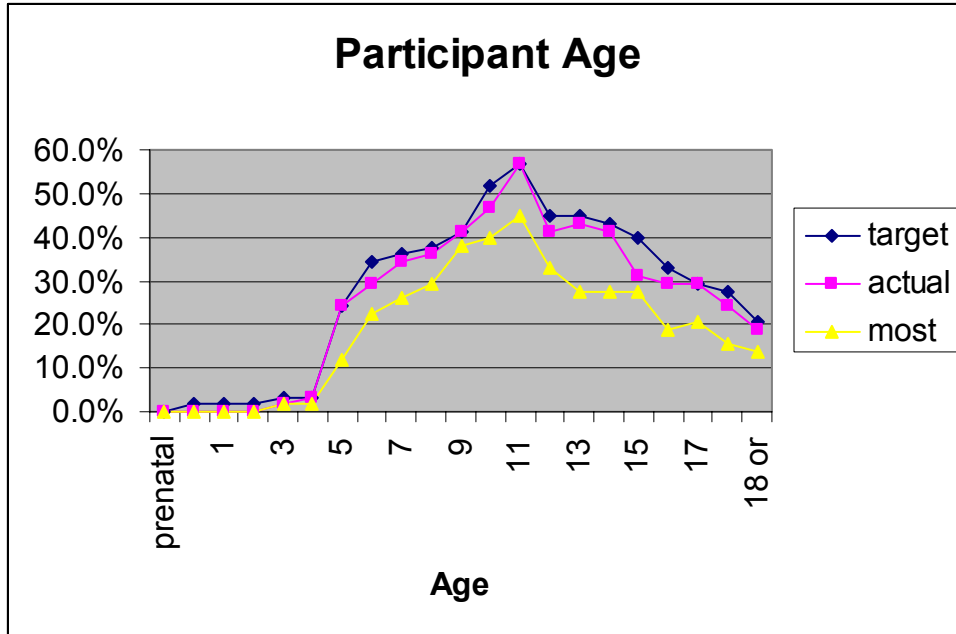
Southeast Missouri Youth Substance Abuse Coalition
Survey Results



- 9 programs are treatment programs and 50% track recidivism (1 program did not answer recidivism question)
- Evaluation process
 - 45% What was done in the program?
 - 45% How was the program carried out?
 - 57% Who participated in the program?
 - 45% Was the program implemented as intended?
 - 53% Did the program achieve what was expected?
 - 24% Did the program produce the desired long-term effects?
 - 10% Perform no evaluations?



Southeast Missouri Youth Substance Abuse Coalition
Survey Results

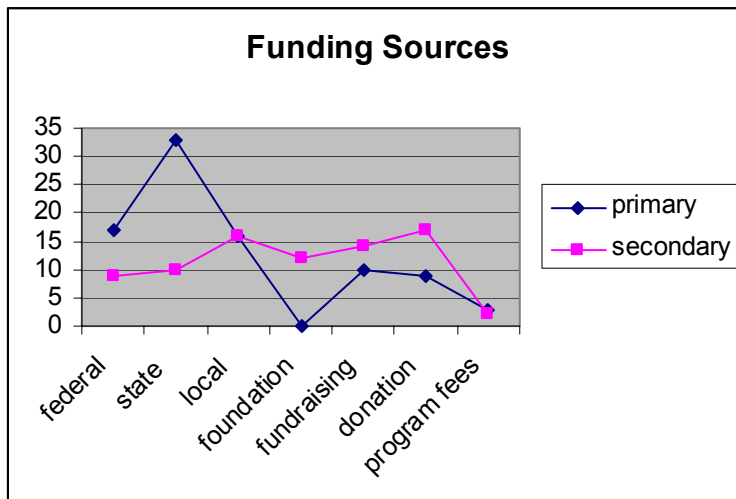


Alternate advertisement methods

- Ask classroom teachers to ask parents to volunteer
- Displays themselves
- interactive web site
- letter from school
- news letter
- newsletter
- not publicized, privacy of minors
- recruit at community events

Southeast Missouri Youth Substance Abuse Coalition Survey Results

- recruit at community events
- School
- School announcements
- school new letters
- school newsletters
- school newspaper and notes
- school presentations
- student activities sent home
- The schools contact me to do presentation.
- through the school's teachers
- We do not promote this program with the public
- We mail information to schools.



Primary Funding Sources

- Alcohol Tobacco and Firearms
- Alcohol Tobacco and Firearms
- Cape Girardeau Public Schools
- Department of Mental Health
- Division of Mental Health
- DoMH, Div. of Alcohol & Drug Abuse
- DoMH, Division of Alcohol & Drug Abuse
- Drug Free Schools
- Drug-Free Schools
- Each C2000 Team/community coalition has its own source of funding i.e. membership dues, donations, SADFS & Community
- Excelsior Optimist Club of Cape fundraisers. Krispy Kreme dough-nuts Grace United Methodist Church
- grant
- Hospital sponsored program
- Individuals, churches, businesses

Southeast Missouri Youth Substance Abuse Coalition Survey Results

- Jackson R-2 Safe and Drug Free Schools Program
- local inkind-display space, free materials from S.E. Regional Support Ctr.
- Many programs are implemented by volunteers Project Charlie, S.E. Regional SC staff, Parents, K103, Volunteer school nurses
- Medicaid is billed when available. No one is refused because they cannot pay.
- Medicaid Waiver
- Missouri
- Office of the State Courts/ Missouri Juvenile Justice Association
- Part of the national FCA program
- Partners in Prevention & Partners in Environmental Change (both funded by Mo. Dept. of Alcohol & Drug Abuse)
- Program and material fees
- safe and drug-free schools funds
- SAMHSA
- School
- School district counseling budget I think originally there was a grant for the McGruff program -
- Sell items with profit going to organization.
- Southeast Missouri Weed & Seed
- State Educational monies
- State of Missouri, Department of Mental Health
- The Department of Mental Health
- The funding for this program falls under the school's budget.
- This program is provided in the Public School Setting
- U.S. Department of Justice
- United Way
- US Department of Education
- We use donations given to the ALA from private parties.

Secondary funding sources

- Banquets, golf marathon, phone-a-thon
- Benefit concert
- Block Grant dollars go to DoMH/Div. of ADA
- Block grant to DoMH, Div. of ADA
- Cape Girardeau Fraternal Order of the Eagles
- Cape Girardeau Fraternal Order of the Eagles
- Cape Girardeau Fraternal Order of the Eagles
- Civic organizations and citizens.
- Division of Mental Retardation and Developmental Disabilities
- foundation and grant fundraising.
- Friends of Scouting
- Have received grant in past from United Way, Caring Communities and have raised funds through tax credit programs.
- Higher education
- Immaculate Conception Parish Subsidy Tuition paid by parents
- Jackson City taxes
- Local business

Southeast Missouri Youth Substance Abuse Coalition
Survey Results

- Local United way Papa Johns Pizza night Optimist club
- Missouri Alliance
- MO Foundation for Health
- National office and grants
- Numerous grants applied for yearly.
- Perry County Mill Tax
- Requests donations from local merchants and companies.
- S.E.Regional Support Center Staff Time maintaining corners, counting materials for evaluation
- SCHOOL PTA - TO PAY FOR SMALL TOKENS TO PROMOTE EDUCATION, BOOKLETS, BOOKMARKS, PAPER, PENCILS, ETC.
- Scott City R-1 and United Way
- See #35
- State of Missouri, Department of Mental Health
- Student dues
- They pay dues
- United Way 1 time grants, ADA C2000 grants
- United Way Children's Fund